



U.S. Small Business  
Administration

---

# SBA 7(A) Premium Heat Maps

5-Year Visualizations View

---



## Table of Contents

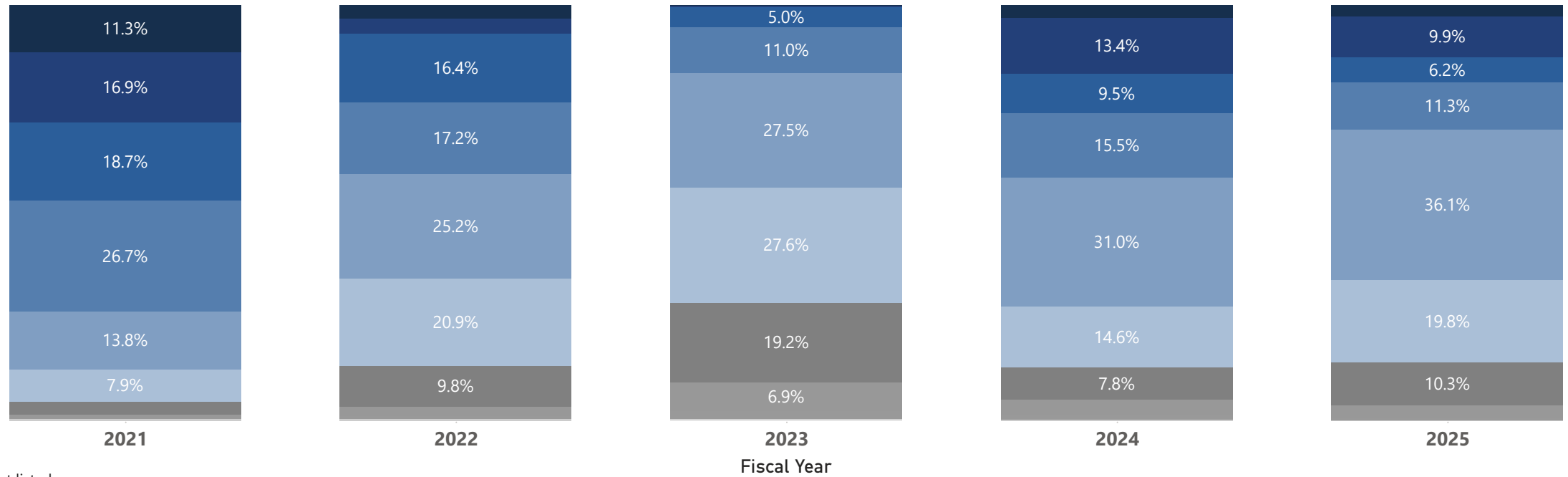
---

- 1 Yearly Purchaser Price Distribution (# Loans)
- 2 Yearly Purchaser Price Distribution (\$ Value)
- 3 2-Year View: Monthly Purchaser Price Distribution (# Loans)
- 4 Table View: Monthly Purchaser Price Distribution (# Loans)
- 5 2-Year View: Monthly Purchaser Price Distribution (\$ Value)
- 6 Table View: Monthly Purchaser Price Distribution (\$ Value)
- 7 NAICS Sector Distribution (# Loans)
- 8 NAICS Sector Distribution (\$ Value)

## Yearly Purchaser Price Distribution by Percentage of Number of Loans (%) (FY 2021 - 2025)

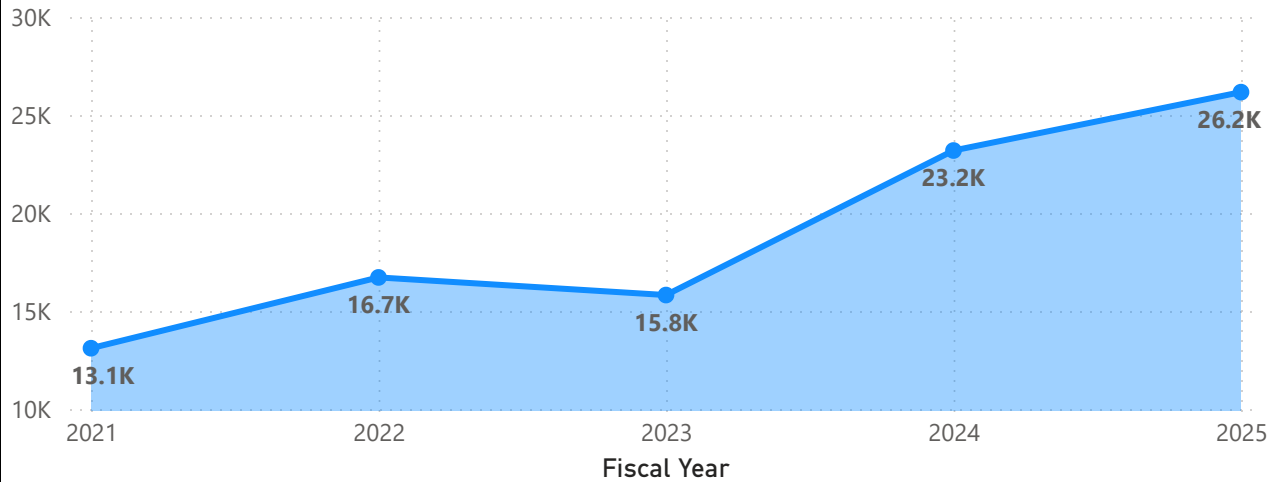
### Premium Px as % of Par

- Higher than 118.00
- 116.00-117.99
- 114.00-115.99
- 112.00-113.99
- 110.00-111.99
- 108.00-109.99
- 106.00-107.99
- 104.00-105.99
- 102.00-103.99
- 100.00-101.99
- Below 100.00



Please refer to table for % figures not listed.

### Number of Loans Sold by Fiscal Year



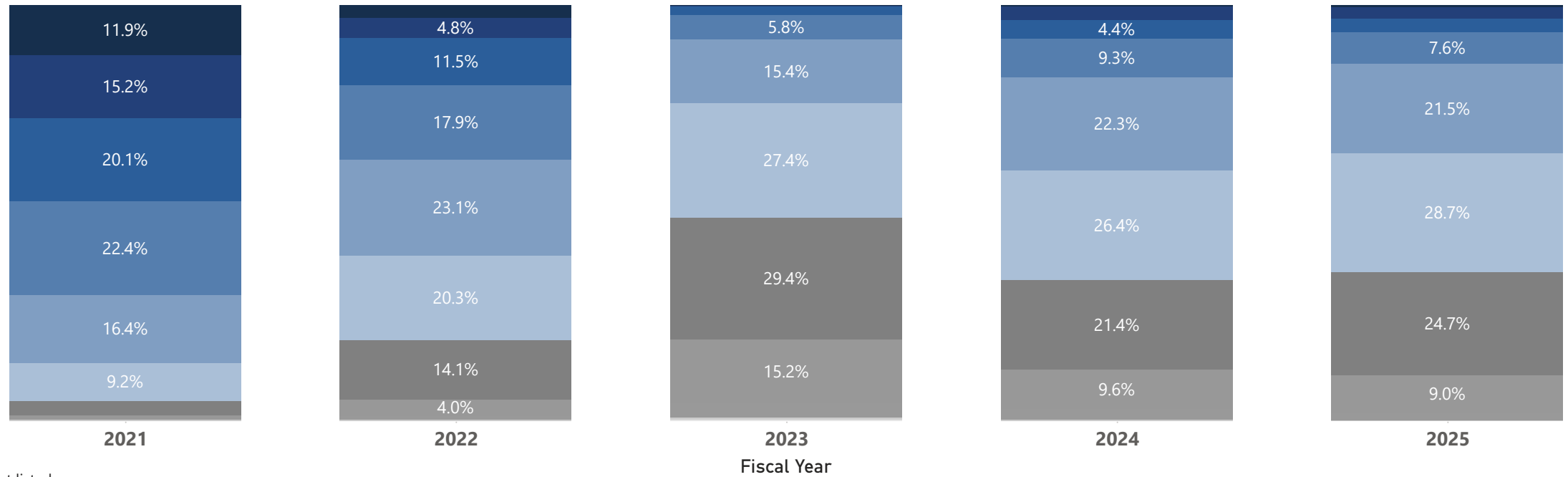
Premium Px as % of Par	2021	2022	2023	2024	2025	Total
Higher than 118.00	11.32%	3.18%	0.05%	3.02%	2.61%	<b>3.58%</b>
116.00-117.99	16.95%	3.75%	0.35%	13.45%	9.85%	<b>9.05%</b>
114.00-115.99	18.70%	16.44%	4.98%	9.54%	6.18%	<b>10.33%</b>
112.00-113.99	26.74%	17.21%	10.96%	15.48%	11.30%	<b>15.44%</b>
110.00-111.99	13.79%	25.18%	27.55%	30.96%	36.13%	<b>28.43%</b>
108.00-109.99	7.92%	20.93%	27.65%	14.64%	19.85%	<b>18.42%</b>
106.00-107.99	3.02%	9.83%	19.17%	7.78%	10.33%	<b>10.09%</b>
104.00-105.99	0.90%	2.37%	6.94%	3.70%	2.97%	<b>3.42%</b>
102.00-103.99	0.21%	0.63%	1.81%	1.06%	0.59%	<b>0.86%</b>
100.00-101.99	0.45%	0.48%	0.32%	0.38%	0.16%	<b>0.34%</b>
Below 100.00			0.21%		0.01%	<b>0.01%</b>
<b>Total</b>	<b>100.00%</b>	<b>100.00%</b>	<b>100.00%</b>	<b>100.00%</b>	<b>100.00%</b>	<b>100.00%</b>



## Yearly Purchaser Price Distribution by Percentage of Total Dollar Value (%) (FY 2021 - 2025)

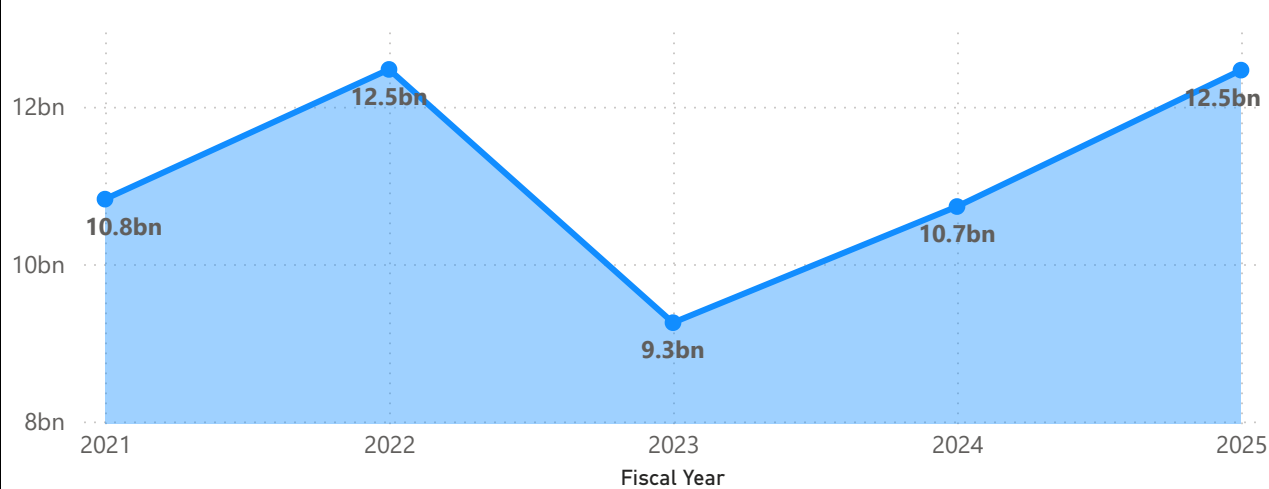
### Premium Px as % of Par

- Higher than 118.00
- 116.00-117.99
- 114.00-115.99
- 112.00-113.99
- 110.00-111.99
- 108.00-109.99
- 106.00-107.99
- 104.00-105.99
- 102.00-103.99
- 100.00-101.99
- Below 100.00



Please refer to table for % figures not listed.

### Total Dollar Value by Fiscal Year



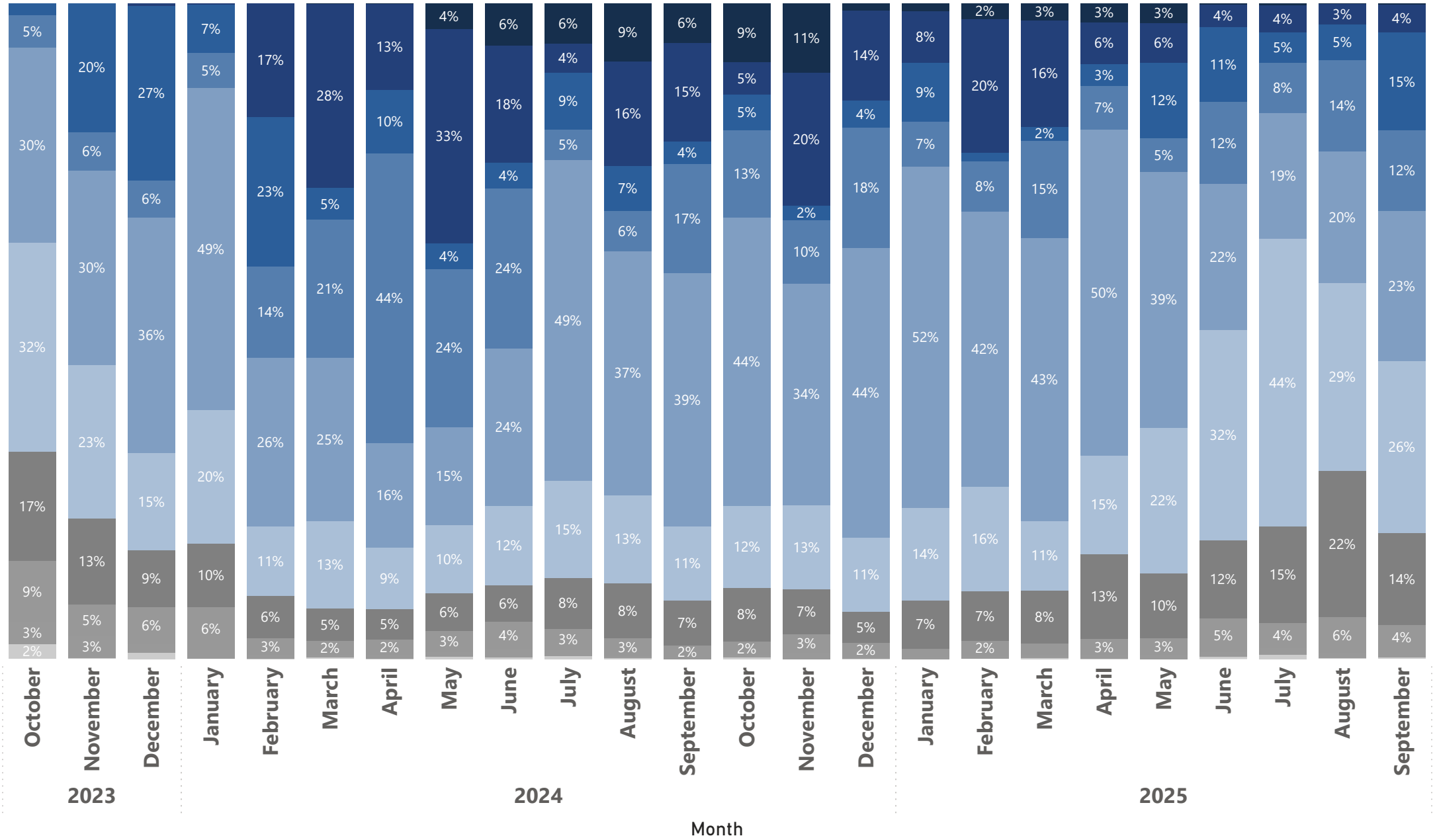
Premium Px as % of Par	2021	2022	2023	2024	2025	Total
Higher than 118.00	11.91%	3.03%	0.02%	0.27%	0.40%	<b>3.14%</b>
116.00-117.99	15.16%	4.80%	0.18%	3.42%	2.83%	<b>5.34%</b>
114.00-115.99	20.15%	11.50%	2.18%	4.36%	3.22%	<b>8.41%</b>
112.00-113.99	22.40%	17.86%	5.84%	9.34%	7.64%	<b>12.82%</b>
110.00-111.99	16.36%	23.10%	15.40%	22.35%	21.48%	<b>20.01%</b>
108.00-109.99	9.23%	20.32%	27.41%	26.43%	28.66%	<b>22.38%</b>
106.00-107.99	3.34%	14.13%	29.44%	21.37%	24.75%	<b>18.35%</b>
104.00-105.99	1.02%	3.98%	15.25%	9.62%	9.00%	<b>7.48%</b>
102.00-103.99	0.13%	0.93%	3.48%	2.51%	1.74%	<b>1.68%</b>
100.00-101.99	0.30%	0.36%	0.40%	0.34%	0.24%	<b>0.32%</b>
Below 100.00			0.20%		0.02%	<b>0.07%</b>
<b>Total</b>	<b>100.00%</b>	<b>100.00%</b>	<b>100.00%</b>	<b>100.00%</b>	<b>100.00%</b>	<b>100.00%</b>



# Monthly Purchaser Price Distribution by Percentage of Number of Loans (%) (FY 2024 - 2025)

## Premium Px as % of Par

- Higher than 118.00
- 116.00-117.99
- 114.00-115.99
- 112.00-113.99
- 110.00-111.99
- 108.00-109.99
- 106.00-107.99
- 104.00-105.99
- 102.00-103.99
- 100.00-101.99
- Below 100.00



### Monthly Purchaser Price Distribution by Percentage of Number of Loans (%) (FY 2024 - 2025)

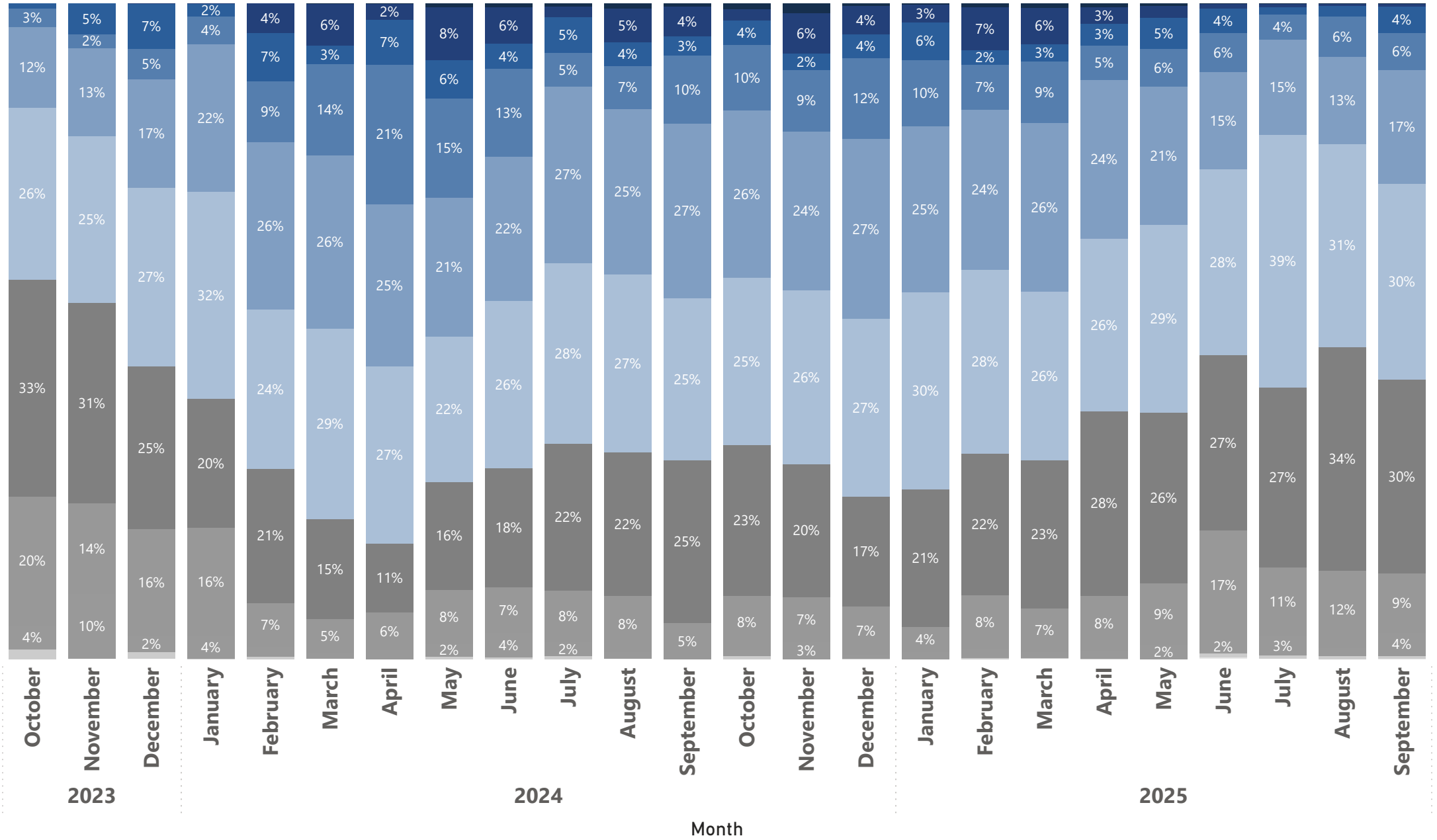
Year	Below 100.00	100.00-101.99	102.00-103.99	104.00-105.99	106.00-107.99	108.00-109.99	110.00-111.99	112.00-113.99	114.00-115.99	116.00-117.99	Higher than 118.00	Total
<b>2023</b>		<b>1.07%</b>	<b>2.64%</b>	<b>6.36%</b>	<b>12.49%</b>	<b>22.64%</b>	<b>31.99%</b>	<b>5.54%</b>	<b>17.15%</b>	<b>0.13%</b>		<b>100.00%</b>
October		2.30%	3.34%	9.34%	16.68%	31.88%	29.73%	4.97%	1.78%			100.00%
November		0.18%	3.39%	4.76%	13.09%	23.38%	29.74%	5.89%	19.57%			100.00%
December		0.97%	1.37%	5.60%	8.69%	14.80%	35.89%	5.66%	26.69%	0.34%		100.00%
<b>2024</b>		<b>0.17%</b>	<b>0.59%</b>	<b>2.84%</b>	<b>6.48%</b>	<b>12.43%</b>	<b>33.50%</b>	<b>17.09%</b>	<b>6.56%</b>	<b>15.96%</b>	<b>4.38%</b>	<b>100.00%</b>
January		0.08%	1.33%	6.49%	9.70%	20.41%	49.10%	5.32%	7.43%	0.16%		100.00%
February		0.10%	0.52%	2.57%	6.45%	10.59%	25.69%	14.00%	22.81%	17.25%		100.00%
March		0.30%	0.42%	2.04%	4.96%	13.36%	24.86%	21.04%	4.84%	28.13%	0.04%	100.00%
April		0.06%	0.57%	2.32%	4.70%	9.29%	16.03%	44.19%	9.63%	13.14%	0.06%	100.00%
May		0.37%	0.74%	3.16%	5.74%	10.37%	15.01%	24.12%	3.90%	32.70%	3.90%	100.00%
June		0.26%	1.36%	4.09%	5.53%	12.17%	23.96%	24.47%	3.87%	17.87%	6.43%	100.00%
July		0.46%	0.93%	3.25%	7.78%	14.74%	48.97%	4.59%	8.71%	4.43%	6.13%	100.00%
August		0.14%	0.33%	2.73%	8.36%	13.49%	37.12%	6.16%	6.86%	15.98%	8.83%	100.00%
September			0.04%	2.01%	6.90%	11.28%	38.66%	16.56%	3.52%	15.06%	5.96%	100.00%
October		0.23%	0.34%	2.15%	8.19%	12.43%	44.01%	13.33%	5.37%	5.03%	8.93%	100.00%
November			0.93%	2.85%	6.84%	12.84%	33.84%	9.59%	2.26%	20.27%	10.58%	100.00%
December		0.07%	0.20%	2.18%	4.78%	11.34%	44.11%	18.43%	4.06%	13.75%	1.09%	100.00%
<b>2025</b>	<b>0.02%</b>	<b>0.19%</b>	<b>0.64%</b>	<b>3.18%</b>	<b>11.77%</b>	<b>22.60%</b>	<b>34.40%</b>	<b>10.18%</b>	<b>7.00%</b>	<b>8.59%</b>	<b>1.43%</b>	<b>100.00%</b>
January			0.31%	1.29%	7.38%	14.14%	52.00%	6.82%	9.04%	7.87%	1.17%	100.00%
February		0.09%	0.39%	2.34%	7.49%	16.02%	41.90%	7.66%	1.30%	20.43%	2.38%	100.00%
March		0.16%	0.49%	1.71%	8.11%	10.58%	43.17%	14.88%	2.04%	16.33%	2.53%	100.00%
April		0.10%	0.46%	2.52%	12.95%	15.06%	49.64%	6.68%	3.34%	6.42%	2.83%	100.00%
May			0.53%	2.64%	9.89%	22.21%	39.08%	5.08%	11.53%	6.03%	3.01%	100.00%
June	0.04%	0.35%	0.66%	5.18%	11.91%	32.07%	22.24%	12.50%	11.37%	3.52%	0.15%	100.00%
July		0.64%	1.04%	3.81%	14.73%	43.85%	19.24%	7.68%	4.56%	4.22%	0.23%	100.00%
August		0.17%	0.68%	5.57%	22.24%	28.73%	20.02%	13.94%	5.46%	3.13%	0.06%	100.00%
September	0.08%	0.21%	1.19%	3.73%	14.03%	26.25%	22.85%	12.31%	14.89%	4.31%	0.16%	100.00%
<b>Total</b>	<b>0.01%</b>	<b>0.26%</b>	<b>0.81%</b>	<b>3.31%</b>	<b>9.13%</b>	<b>17.40%</b>	<b>33.71%</b>	<b>13.27%</b>	<b>7.76%</b>	<b>11.54%</b>	<b>2.80%</b>	<b>100.00%</b>



# Monthly Purchaser Price Distribution by Percentage of Total Dollar Value (%) (FY 2024 - 2025)

## Premium Px as % of Par

- Higher than 118.00
- 116.00-117.99
- 114.00-115.99
- 112.00-113.99
- 110.00-111.99
- 108.00-109.99
- 106.00-107.99
- 104.00-105.99
- 102.00-103.99
- 100.00-101.99
- Below 100.00



### Monthly Purchaser Price Distribution by Percentage of Total Dollar Value (%) (FY 2024 - 2025)

Year	Below 100.00	100.00-101.99	102.00-103.99	104.00-105.99	106.00-107.99	108.00-109.99	110.00-111.99	112.00-113.99	114.00-115.99	116.00-117.99	Higher than 118.00	Total
<b>2023</b>		<b>0.84%</b>	<b>5.40%</b>	<b>16.46%</b>	<b>29.31%</b>	<b>26.34%</b>	<b>14.16%</b>	<b>3.22%</b>	<b>4.25%</b>	<b>0.03%</b>		<b>100.00%</b>
October		1.42%	3.69%	19.73%	32.99%	26.30%	12.24%	2.89%	0.73%			<b>100.00%</b>
November		0.08%	9.88%	13.76%	30.61%	25.41%	13.43%	2.15%	4.68%			<b>100.00%</b>
December		1.10%	2.40%	16.30%	24.79%	27.30%	16.56%	4.58%	6.89%	0.08%		<b>100.00%</b>
<b>2024</b>		<b>0.18%</b>	<b>1.60%</b>	<b>7.60%</b>	<b>19.23%</b>	<b>26.45%</b>	<b>25.04%</b>	<b>11.01%</b>	<b>4.11%</b>	<b>4.31%</b>	<b>0.48%</b>	<b>100.00%</b>
January		0.07%	3.52%	16.47%	19.66%	31.53%	22.49%	4.25%	1.96%	0.05%		<b>100.00%</b>
February		0.36%	1.47%	6.72%	20.50%	24.23%	25.57%	9.30%	7.37%	4.48%		<b>100.00%</b>
March		0.08%	0.77%	5.24%	15.27%	29.09%	26.37%	13.96%	2.78%	6.38%	0.06%	<b>100.00%</b>
April		0.02%	1.33%	5.72%	10.58%	27.00%	24.73%	21.28%	6.81%	2.46%	0.07%	<b>100.00%</b>
May		0.36%	1.99%	8.25%	16.44%	22.12%	21.19%	15.15%	5.89%	8.09%	0.52%	<b>100.00%</b>
June		0.30%	3.68%	7.00%	18.11%	25.55%	21.97%	13.39%	3.82%	5.62%	0.56%	<b>100.00%</b>
July		0.53%	2.02%	7.94%	22.35%	27.57%	26.94%	5.09%	5.49%	1.65%	0.44%	<b>100.00%</b>
August		0.08%	1.05%	8.48%	21.87%	27.13%	25.30%	6.58%	3.65%	5.06%	0.81%	<b>100.00%</b>
September			0.02%	5.47%	24.86%	24.68%	26.69%	10.31%	3.01%	4.47%	0.49%	<b>100.00%</b>
October		0.42%	1.07%	8.19%	22.94%	25.47%	25.62%	9.95%	3.75%	1.71%	0.86%	<b>100.00%</b>
November			2.59%	6.89%	20.30%	26.44%	24.26%	9.41%	2.45%	6.24%	1.44%	<b>100.00%</b>
December		0.01%	0.70%	7.31%	16.78%	27.08%	27.43%	12.35%	3.64%	4.30%	0.40%	<b>100.00%</b>
<b>2025</b>	<b>0.04%</b>	<b>0.27%</b>	<b>1.87%</b>	<b>9.51%</b>	<b>26.44%</b>	<b>29.39%</b>	<b>20.00%</b>	<b>6.61%</b>	<b>3.19%</b>	<b>2.41%</b>	<b>0.26%</b>	<b>100.00%</b>
January			1.03%	3.85%	20.98%	30.05%	25.32%	10.17%	5.67%	2.73%	0.18%	<b>100.00%</b>
February		0.11%	1.47%	8.19%	21.63%	27.96%	24.44%	6.83%	2.24%	6.57%	0.56%	<b>100.00%</b>
March		0.18%	0.92%	6.68%	22.51%	25.72%	25.71%	9.46%	2.60%	5.61%	0.62%	<b>100.00%</b>
April		0.02%	1.19%	8.47%	28.16%	26.25%	24.29%	5.25%	3.25%	2.60%	0.52%	<b>100.00%</b>
May			2.18%	9.39%	26.04%	28.59%	21.11%	5.72%	4.80%	1.77%	0.39%	<b>100.00%</b>
June	0.27%	0.59%	2.01%	16.79%	26.67%	28.37%	14.83%	5.94%	3.78%	0.72%	0.02%	<b>100.00%</b>
July		0.57%	2.92%	10.54%	27.38%	38.52%	14.56%	3.81%	1.15%	0.52%	0.03%	<b>100.00%</b>
August		0.42%	1.21%	11.78%	34.19%	30.96%	13.28%	6.15%	1.67%	0.34%	0.00%	<b>100.00%</b>
September	0.06%	0.41%	3.59%	8.98%	29.60%	29.87%	17.32%	5.70%	3.99%	0.48%	0.01%	<b>100.00%</b>
<b>Total</b>	<b>0.02%</b>	<b>0.28%</b>	<b>2.10%</b>	<b>9.29%</b>	<b>23.19%</b>	<b>27.63%</b>	<b>21.88%</b>	<b>8.43%</b>	<b>3.75%</b>	<b>3.10%</b>	<b>0.34%</b>	<b>100.00%</b>

## NAICS Sector Distribution by Number of Loans (FY 2021 - 2025)

NAICS Sector	2021	2022	2023	2024	2025	Average
Accommodation and Food Services	16.72%	17.55%	15.73%	13.78%	13.18%	<b>15.00%</b>
Retail Trade	17.32%	16.42%	14.61%	13.37%	13.20%	<b>14.61%</b>
Professional, Scientific, and Technical Services	7.80%	8.26%	9.99%	11.04%	11.25%	<b>9.99%</b>
Health Care and Social Assistance	10.22%	9.77%	9.28%	9.85%	10.40%	<b>9.95%</b>
Other Services (except Public Administration)	8.62%	9.34%	9.18%	9.69%	10.57%	<b>9.64%</b>
Construction	7.54%	7.37%	9.22%	9.99%	10.94%	<b>9.33%</b>
Manufacturing	6.16%	5.66%	5.68%	5.36%	5.62%	<b>5.65%</b>
Administrative and Support and Waste Management and Remediation Services	5.19%	5.39%	5.02%	6.03%	5.43%	<b>5.47%</b>
Wholesale Trade	3.92%	3.88%	4.62%	4.60%	4.01%	<b>4.22%</b>
Transportation and Warehousing	3.82%	3.82%	4.49%	4.38%	4.02%	<b>4.12%</b>
Arts, Entertainment, and Recreation	3.17%	3.25%	3.32%	3.52%	3.34%	<b>3.34%</b>
Real Estate and Rental and Leasing	2.73%	2.84%	2.87%	2.48%	2.14%	<b>2.55%</b>
Finance and Insurance	3.07%	2.76%	2.42%	2.15%	2.21%	<b>2.45%</b>
Educational Services	1.22%	1.51%	1.58%	1.60%	1.71%	<b>1.56%</b>
Information	0.96%	1.00%	1.14%	1.29%	1.04%	<b>1.10%</b>
Agriculture, Forestry, Fishing and Hunting	1.11%	0.84%	0.65%	0.53%	0.53%	<b>0.69%</b>
Mining, Quarrying, and Oil and Gas Extraction	0.15%	0.15%	0.08%	0.10%	0.17%	<b>0.13%</b>
Utilities	0.19%	0.10%	0.09%	0.12%	0.16%	<b>0.13%</b>
Management of Companies and Enterprises	0.05%	0.08%	0.03%	0.05%	0.06%	<b>0.05%</b>
Public Administration	0.02%	0.02%	0.01%	0.06%	0.03%	<b>0.03%</b>
<b>Total</b>	<b>100.00%</b>	<b>100.00%</b>	<b>100.00%</b>	<b>100.00%</b>	<b>100.00%</b>	<b>100.00%</b>

## NAICS Sector Distribution by Total Dollar Value (FY 2021 - 2025)

NAICS Sector	2021	2022	2023	2024	2025	Average
Accommodation and Food Services	22.62%	24.77%	22.16%	20.40%	20.31%	<b>22.08%</b>
Retail Trade	17.58%	17.43%	16.30%	15.17%	15.02%	<b>16.30%</b>
Health Care and Social Assistance	10.04%	8.92%	9.16%	9.37%	9.71%	<b>9.44%</b>
Other Services (except Public Administration)	7.60%	8.04%	8.10%	8.43%	9.31%	<b>8.32%</b>
Construction	6.60%	6.26%	7.91%	9.14%	9.06%	<b>7.78%</b>
Manufacturing	7.03%	6.75%	7.16%	6.66%	6.87%	<b>6.88%</b>
Professional, Scientific, and Technical Services	5.60%	5.73%	6.56%	7.28%	8.09%	<b>6.67%</b>
Wholesale Trade	4.65%	5.13%	4.91%	4.95%	4.50%	<b>4.82%</b>
Administrative and Support and Waste Management and Remediation Services	2.91%	3.50%	3.63%	4.43%	3.59%	<b>3.61%</b>
Transportation and Warehousing	3.77%	3.16%	3.44%	3.35%	3.37%	<b>3.41%</b>
Arts, Entertainment, and Recreation	2.77%	2.35%	3.03%	3.23%	3.26%	<b>2.92%</b>
Real Estate and Rental and Leasing	2.65%	2.54%	2.69%	2.55%	1.98%	<b>2.46%</b>
Finance and Insurance	2.49%	2.03%	1.94%	1.81%	1.64%	<b>1.98%</b>
Educational Services	0.96%	1.11%	1.15%	1.26%	1.32%	<b>1.17%</b>
Information	1.12%	0.83%	0.92%	1.01%	0.77%	<b>0.92%</b>
Agriculture, Forestry, Fishing and Hunting	1.12%	0.89%	0.73%	0.50%	0.61%	<b>0.77%</b>
Mining, Quarrying, and Oil and Gas Extraction	0.27%	0.31%	0.13%	0.20%	0.28%	<b>0.24%</b>
Management of Companies and Enterprises	0.06%	0.17%	0.03%	0.09%	0.17%	<b>0.11%</b>
Utilities	0.12%	0.08%	0.06%	0.12%	0.13%	<b>0.10%</b>
Public Administration	0.02%	0.01%	0.00%	0.06%	0.00%	<b>0.02%</b>
<b>Total</b>	<b>100.00%</b>	<b>100.00%</b>	<b>100.00%</b>	<b>100.00%</b>	<b>100.00%</b>	<b>100.00%</b>